

B&J Equipment P/L

2005 Atlas Copco XAH4 OEM Drilling Compressor (UEQ280211A)



Price: POA

Equipment Details:

- Meter Reading: 43
- Serial # :

Contact Details:

- Rhys Wieneke
- Email: rhys@bjequip.com.au
- Phone: 03 9336 7347
- Fax: 03 9336 7357
- Web: www.bjequip.com.au

Location Details:

- Location: 68-72 Webber Pde East Keilor Victoria 3033

Comments:

1. Availability subject to prior sale.
2. All used equipment sold "as is, where is".
3. All prices are subject to change without notice and are exclusive of GST.
4. Repair quotes are subject to our fitter's final inspection.
5. Hours quoted may be indicative or approximate only
6. No warranty expressed or implied.

This quotation is in accordance with our attached Terms of Sale and Warranty and/or Terms and Conditions of Rental

Specifications

General Appearance

Item

Assessment

Photo

picture, front



picture, left side



picture, right side



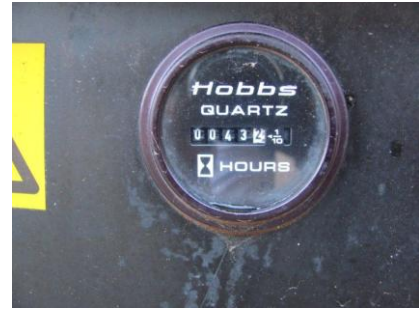
picture, rear

Gauges

1. Availability subject to prior sale.
2. All used equipment sold "as is, where is".
3. All prices are subject to change without notice and are exclusive of GST.
4. Repair quotes are subject to our fitter's final inspection.
5. Hours quoted may be indicative or approximate only
6. No warranty expressed or implied.

This quotation is in accordance with our attached Terms of Sale and Warranty and/or Terms and Conditions of Rental

Hour Meter



Data Plate
Serial Number
Engine



1. Availability subject to prior sale.
2. All used equipment sold "as is, where is".
3. All prices are subject to change without notice and are exclusive of GST.
4. Repair quotes are subject to our fitter's final inspection.
5. Hours quoted may be indicative or approximate only
6. No warranty expressed or implied.

This quotation is in accordance with our attached Terms of Sale and Warranty and/or Terms and Conditions of Rental

Additional Photos

	Item	Assessment	Photo
Photo #1			
Photo #2			
Photo #3			
Photo #4			
Photo #5			

1. Availability subject to prior sale.
2. All used equipment sold "as is, where is".
3. All prices are subject to change without notice and are exclusive of GST.
4. Repair quotes are subject to our fitter's final inspection.
5. Hours quoted may be indicative or approximate only
6. No warranty expressed or implied.

This quotation is in accordance with our attached Terms of Sale and Warranty and/or Terms and Conditions of Rental

Atlas Copco OEM Compressor

XAH 2-4 / XRV 10-12 / XRX 10-12

**Increase your Drilling Performance
with our modular OEM Compressor**



Capacity up to 600 l/s / 1270 cfm
Pressure up to 30 bar / 435 psi

Team-up for Total Solutions

Atlas Copco

1. Availability subject to prior sale.
2. All used equipment sold "as is, where is".
3. All prices are subject to change without notice and are exclusive of GST.
4. Repair quotes are subject to our fitter's final inspection.
5. Hours quoted may be indicative or approximate only
6. No warranty expressed or implied.

This quotation is in accordance with our attached Terms of Sale and Warranty and/or Terms and Conditions of Rental

Atlas Copco has a complete range of air compressor packages for drilling & other special applications, including rig manufacturers, speciality packagers, rig retrofits,...

Drilling can now be carried out more productively than before with Atlas Copco new range of OEM compressors.

This new range offers increased drilling efficiency and improved penetration rates. They are ideally matched to the demands of all types of drill rig operations, including water-well drilling, oil, gas, reserve circulation and blasthole as well as tasks such as pile driving.

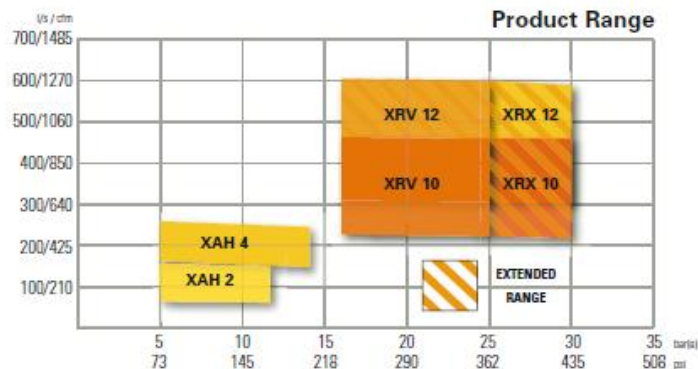
The compact size, reliability and versatility of the OEM range ensures high quality performance, whatever the conditions.

The models XAH 2 and XAH 4 are delivered with integrated pressure vessel.

The 4 top models XRV 10, XRX 10, XRV 12 and XRX 12 are delivered as 2 modules: the compressor module and the pressure vessel. This offers you added flexibility. With this arrangement you can choose the ideal position for the pressure vessel to optimize space. All models can operate without canopy.



Contact your Atlas Copco representative for detailed product information & installation recommendations



1. Availability subject to prior sale.
2. All used equipment sold "as is, where is".
3. All prices are subject to change without notice and are exclusive of GST.
4. Repair quotes are subject to our fitter's final inspection.
5. Hours quoted may be indicative or approximate only
6. No warranty expressed or implied.

This quotation is in accordance with our attached Terms of Sale and Warranty and/or Terms and Conditions of Rental

1. Availability subject to prior sale.
2. All used equipment sold "as is, where is".
3. All prices are subject to change without notice and are exclusive of GST.
4. Repair quotes are subject to our fitter's final inspection.
5. Hours quoted may be indicative or approximate only
6. No warranty expressed or implied.

This quotation is in accordance with our attached Terms of Sale and Warranty and/or Terms and Conditions of Rental

The heart of the machine is an oil-injected rotary screw compressor, which can be powered by virtually any power source on a drill rig, truck or other vehicle.

Atlas Copco R&D Team developed a new high pressure stage to extend module life when operating at high capacity and pressure.



The new units complement the range of the smaller single stage OEM compressors with the smallest XAH 2 and a larger sister model the XAH 4 which can deliver a maximum of 246 l/s (520 cfm) at 14 bar (203 psi).

Atlas Copco strongest points as a compressor supplier to the drilling industry include a longstanding experience as a group in both compressor technique and mining technique. This synergy has created a better understanding from the drilling industry compressor requirements.

Your local Atlas Copco point of contact can calculate the module that best fits your needs online! Also dimensional drawings, technical installation data and application engineering support is available through your local Atlas Copco representative.

• Highest reliability in the toughest of environmental conditions!

-25°C or +50°C, our compressors have no problem with these conditions and are designed to guarantee your continuous drilling operation.

• Easy to install and to service.

All service points are within easy reach through large removable side panels on both sides. Daily service points are accessible without removing any panel. A robust connection is foreseen to hook up for full remote monitoring.

• Smallest in footprint and weight, best in performance!

Due to our continuous design effort we were able to create the most compact and light OEM compressor for maximum drilling performance.

• Most efficient in power and fuel consumption

Atlas Copco designed screw elements to give highest output at lowest power demand and lowest fuel consumption.

Technical data

		XAH 2	XAH 4	XRV 10	XRX 10	XRV 12	XRX 12
Effective working pressure	Bar(e)	12	14	25	30	25	30
	psi	175	203	365	435	365	435
Compressor							
Maximum free air delivery guaranteed according to ISO1217 ad.3 1996 annex D	l/s (cfm)	150 (318)	246 (520)	472 (1000)	450 (955)	600 (1270)	590 (1250)
Oil Capacity	l	28	50	77	77	77	77
Number of compression stages		1	1	2	2	2	2
Indicative input power required (incl. fan) for max. output	kW	78	147	302	315	388	415
Dimensions and weight							
Compressor module LxWxH	m	0.99 x 0.94 x 1.20	1.25 x 1.39 x 1.16	1.59 x 1.70 x 1.36	1.59 x 1.70 x 1.36	1.59 x 1.70 x 1.36	1.59 x 1.70 x 1.36
Compressor module weight (ready to operate)	kg	550	760	1375	1405	1425	1455
Vessel module LxWxH	m	/	/	0.60 x 0.41 x 1.25	0.60 x 0.41 x 1.25	0.60 x 0.41 x 1.25	0.60 x 0.41 x 1.25
Vessel module weight (ready to operate)	kg	/	/	300	300	300	300

1. Availability subject to prior sale.
2. All used equipment sold "as is, where is".
3. All prices are subject to change without notice and are exclusive of GST.
4. Repair quotes are subject to our fitter's final inspection.
5. Hours quoted may be indicative or approximate only
6. No warranty expressed or implied.

This quotation is in accordance with our attached Terms of Sale and Warranty and/or Terms and Conditions of Rental



Safeguarding your profitability and investment... ...for your peace of mind



The availability, quality and maintenance of your compressor has a direct effect on your production performance and ultimately affects your bottom line.

Irregular, insufficient or unprofessional maintenance can result in expensive downtime with a subsequent loss of production, affecting your profitability and damaging your reputation.

Atlas Copco carefully monitors the maintenance needs of all its compressors.

Service intervals are established to ensure optimum performance is maintained and operating costs reduced. Proper maintenance will ensure your compressor runs as efficiently and economically as possible.



Atlas Copco has compiled a portfolio of aftermarket services that guarantee the protection of your investment and provide the highest quality service, both locally and worldwide.

Depending on your requirements, we can deliver parts kits, we can cover your individual service calls or provide a range of service plans, tailored to suit your needs.

Genuine Parts

Atlas Copco makes no compromise on the quality of replacement parts: only genuine parts provide the longevity and reliability you demand. Selected high quality Atlas Copco compressor oils are also available. These meet the stringent quality specifications required to enable your unit to run smoothly, shift after shift.



ServicePlan

For complete peace of mind, Atlas Copco has a range of service agreements to suit your needs. Maintenance budgets are clear and simple, with prices fixed in advance. Operational costs come down and efficiency goes up. You choose the service options and the time period to suit your needs.

Commitment

Atlas Copco employs two thousand factory trained service technicians in over 150 countries worldwide. Should a problem ever occur, access to their expertise is only a telephone call away. With Direct Daily Deliveries, genuine parts are delivered to your doorstep in record times, wherever you are.



Never use compressed air as breathing air without prior purification in accordance with local legislation and standards.

Visit our website: www.atlascopco.com



29351618 30 - Subject to alteration without notice. Printed in Belgium. Copyright 2003, Atlas Copco Airpower n.v., Willebroek, Belgium.

1. Availability subject to prior sale.
2. All used equipment sold "as is, where is".
3. All prices are subject to change without notice and are exclusive of GST.
4. Repair quotes are subject to our fitter's final inspection.
5. Hours quoted may be indicative or approximate only
6. No warranty expressed or implied.

This quotation is in accordance with our attached Terms of Sale and Warranty and/or Terms and Conditions of Rental