



Diversified Sales & Hire

ABN 11 637 196 073.

Ph: 1300 981 699

Item Information

| | |
|------------------|--|
| ID# | <i>D070224-1</i> |
| Make | <i>Volvo FM9 / Disab Tella</i> |
| Model | <i>Disab Tella</i> |
| Year | <i>2008</i> |
| Serial# | <i>YV5JL80G17D129917</i> |
| Condition | <i>Used</i> |
| Hours | <i>Volvo 134341Kms / Disab 5076hrs</i> |
| Location | <i>Victoria</i> |

Price Information

| | |
|--------------|-------------------------|
| Price | <i>\$143,000.00 AUD</i> |
| Code | <i>Inc GST</i> |

Contact Details

| | |
|-----------------------|----------------------------|
| Contact Person | <i>Rhys Wieneke</i> |
| Phone Number | <i>03 9336-7347</i> |
| Fax Number | <i>03 9336 7357</i> |
| Mobile Number | <i>0499 500 300</i> |
| Email | <i>rhys@bjequip.com.au</i> |

Remarks

Available for Purchase Only

1. Availability subject to prior sale.
2. All used equipment sold "as is, where is".
3. All prices are subject to change without notice and are exclusive of GST.
4. Repair quotes are subject to our fitter's final inspection.
5. Hours quoted may be indicative or approximate only
6. No warranty expressed or implied.
7. This quotation is in accordance with our attached Terms of Sale and Warranty and/or Terms and Conditions of Rental.

10/2007, Volvo,FM11,8x4 Chassis ,Automatic,Airbag Suspension ,6 Cyl,Diesel Turbo,
134341kms showing

GVM: 34000kg

Rego. No: SB80DU

Vin No. YV5JL80G17D129917

Disab Vacuum Loader Wet and Dry Material , 10m³ waste capacity , 160hp diesel motor, roots
type blower air volume 6650 m³ , fully silenced
enclosure

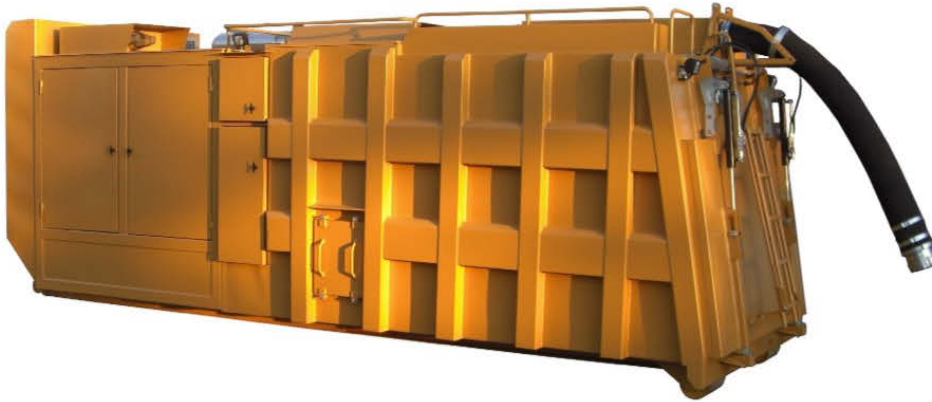
Container (Dust Bin)

Type: Square container with external strengthening.

Volume: 4,3 m³ primary container

1,3 m³ filter compartment.

**** Please See Specs and photos below pages 3-7****



The SDL units are handled by a standard ro-ro-vehicle and can operate on the truck-chassis or at ground level.

Vac Loader SDL

The SDL suction unit meets the industry's high demands on efficiency, reliability, ease of operation and maintenance giving excellent value for money.

The SDL units are complete self-supported diesel powered vacuum loaders mounted onto a ro-ro-frame. Dry material as well as liquids can be handled. In combination with a fixed pipe network they can either operate as central vacuum units for industrial applications or as independent vacuum loaders with a 6" hose.

- Rigid design for industrial use
- Vacuum pump of the Roots-type with high vacuum (80%)
- Filter system for dry and wet material
- Automatic cleaning without compressed air
- Donkey engine power ranging from 129 kW to 180 kW
- Large dust collecting hopper
- Low noise level

WHY SDL

Heavy industry sites often have production, raw material handling, packing etc. in several buildings /domestic areas. Therefore an ordinary stationary central vacuum cleaning system is not the optimum solution. Further more, cleaning contractors need flexible and powerful vacuum units to meet customers requirements for cost-efficiency. This is why the SDL is the perfect choice. The large collecting hopper placed on a ro-ro-frame for the handling by truck makes the whole unit easy to handle. The unit can start operating as soon a pipe/hose is connected. Discharging sucked material is easily managed by tipping the body with a ro-ro-truck.

The large load volume in combination with the high suction capacity provided by the Roots pump, makes the SDL especially suited for heavy industrial environments.

OPERATION

The vacuumed material is first separated in a special designed fall chamber with a durable proof pre-separator inlet. Here heavy particles fall to the bottom of the container. The air is diverted to the main filter section where remaining fine dust is separated. From the filter section the air passes a safety filter before entering the vacuum pump and finally a silencer before exhaust. The well insulated motor compartment housing ensures a low noise level of the unit.

An unloading valve is placed between the main filter system and the vacuum pump. The vacuum is immediately equalised when the valve opens. At the same time the main filters are being cleaned. This also prevents counter-rotation of the engine as well as less power consumption at starting. It can also be activated by safety control functions. All functions are operated from the dust-tight control panel which contains control lamps indicating operational status of the unit.

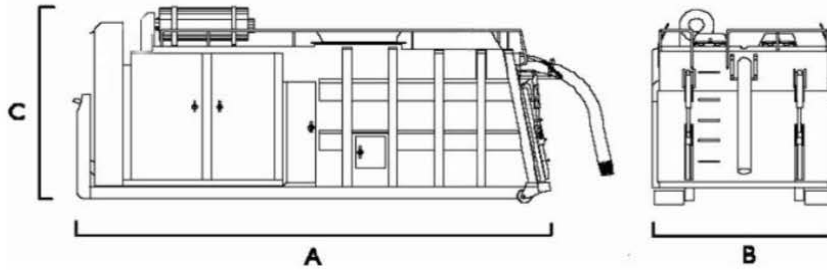
APPLICATIONS

For any application where collection of dust is required, i.e. cleaning out deep pits, trenches, bucket elevators, conveyor spills, overhead cranes and runaways, dust collectors, processing machine spillage, and vacuum excavating.

The unit is particularly suitable for collecting bulky or sticky material thanks to the convenient discharging.

USERS

Manufacturers of Cement, Lime, Gypsum, Tiels, Ceramics, Fertilizers and Alumina.
Foundries, Steel mills, Quarries, Mines, Pulp- and Paper Industry, Incineration Plants, Thermo-electric Power Plants, Cleaning Contractors....



Vac Loader SDL

VACUUM PUMP

Vacuum is generated by a pump of the Roots type, driven via V-belt by a water-cooled diesel engine, all placed on an anti-vibrated steel structured machine frame. The vacuum pump is equipped with a spring-loaded safety valve preventing the vacuum to exceed maximum operation range. For extra protection of the pump, the unit comes with a high temperature sensor and a safety filter.

MAIN FILTER

The main filter compartment contains a cassette filter with flat filter bags of specially treated polyester needle felt. Service of filters is easy from the clean gas side and from outside of the unit.

The filter system is equipped with a vacuum controlled ATM (air-repulse) filter cleaning system. When activated, large air inlets will ensure a fast backwards air direction through the filters, efficiently knocking off collected dust from the filter surface.

Container (Dust Bin)

Type: Square container with external strengthening.
Volume: 4,3 m³ primary container
1,3 m³ filter compartment
Bin level control of paddle type

CONTROLS - Safety functions

All functions are automatically operated from the control panel, and accessible from outside the unit. The machine is equipped with run time meter to guide the user in necessary service and maintenance measures.

Engine Automatic Shut-down:

- Oil pressure too low
- Engine temperature too high

Automatic vacuum relief Valves Open:

- Exhaust air temperature from vacuum pump too high
- Alarm from bin-level control
- Alarm from DP-switch filters (option)

MISCELLANEOUS

Filter class: L,M IEC EN60335-2-69
Hose connect: 202 mm
Material: Steel S 235 JG2
Ro-/Ro-frame: SS 3021
Fuel tank: 325 litres
Electrical system: 24 VDC
Painting: System C2, RAL 3003 red

OPTIONS

- BIN Painted inside
- DP-Gauge; Safety Filter
- DP-Switch; Safety Filter
- Hydraulic Cylinder Locking Filter Door
- Hydraulic Cylinder Locking Tailgate
- Hydraulic Unit for Hydraulic Control
- Inlet Hose Drop Down, Connector & Holder (app. 1,5 m)
- Ladder
- Level Control; Paddle type (24V DC)
- Radio Remote Control (CE, Carrier wave interrupter)
- Roof Railing for Hose Transport
- Stand-by Heater 230V

| Item / Model | SDL 130 80% | SDL 160 80% |
|--|----------------|----------------|
| Dimensions, mm A | 6390 | 6390 |
| B | 2490 | 2490 |
| C | 2600 | 2600 |
| Weight, kg (approx) | 8800 | 9200 |
| Max. Vacuum, mbar | 800 | 800 |
| Air Volume, m ³ /h (unloaded) | 4600 | 6650 |
| Engine Power, kW | 129 | 168 |
| Engine Emissions 97/68/EC (step 3A) | Yes | Yes |
| Main Filter Surface, m ² | 40 | 40 |
| Safety Filter Surface, m ² | 36 | 36 |
| Noise level dB(A) (at 7 m distance) | 84 | 85 |
| Lay-out | F-20147 | |

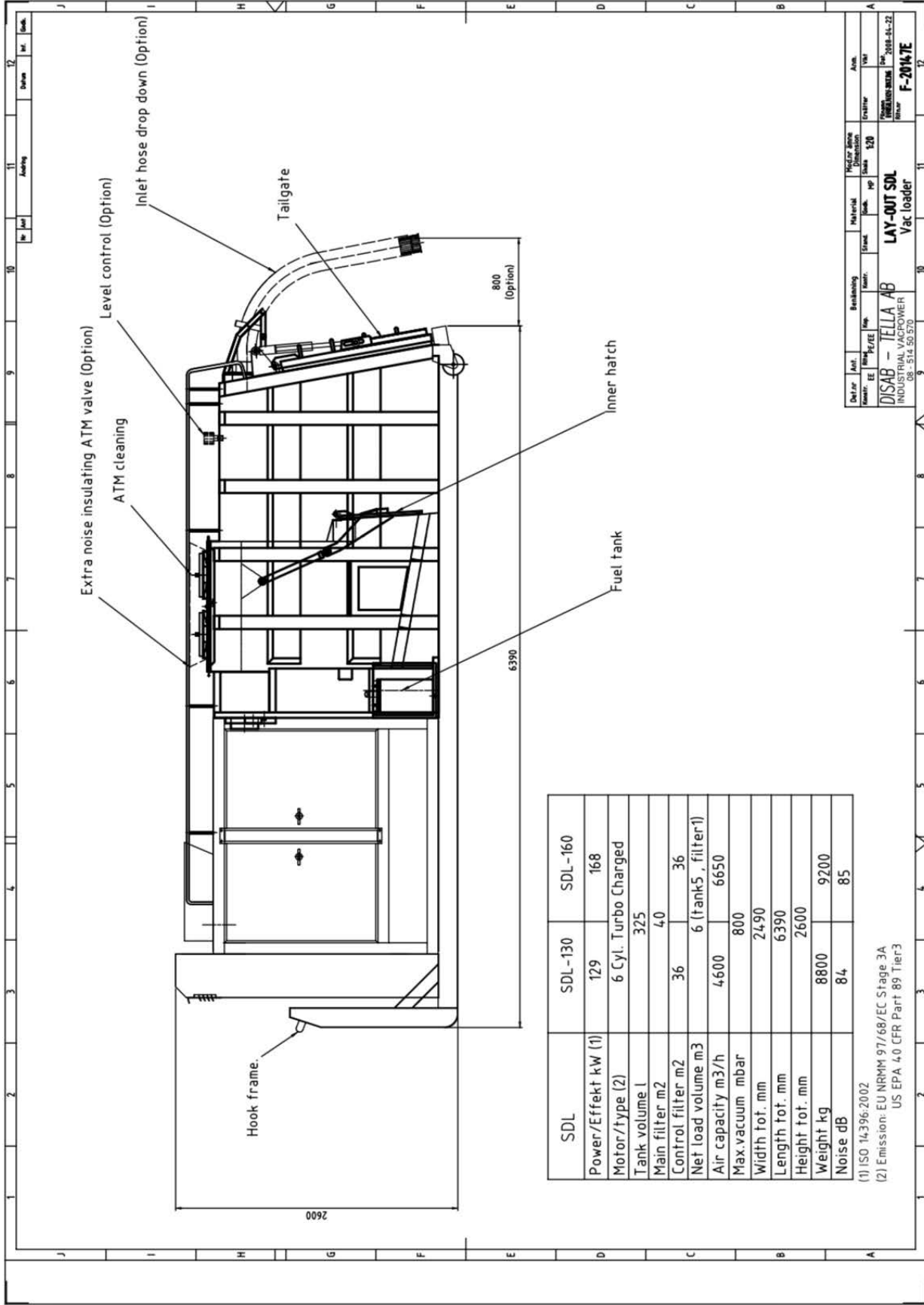
We reserve the right to alter any specifications without prior notice

201303

Manufacturer:
DISAB-TELLA AB
Cedersdalsvägen 1
SE-186 40 Vallentuna
Sweden

Tel: +46 (0) 8 514 505 70
Fax: +46 (0) 8 511 754 66
E-mail: industrial@disab.com
www.disab.com

Distributor:



| SDL | SDL-130 | SDL-160 |
|---------------------|----------------------|---------|
| Power/Effekt kW (1) | 129 | 168 |
| Motor/Type (2) | 6 Cyl. Turbo Charged | |
| Tank volume l | 325 | |
| Main filter m2 | 40 | |
| Control filter m2 | 36 | 36 |
| Net load volume m3 | 6 (tank5, filter1) | |
| Air capacity m3/h | 4600 | 6650 |
| Max.vacuum mbar | 800 | |
| Width tot. mm | 2490 | |
| Length tot. mm | 6390 | |
| Height tot. mm | 2600 | |
| Weight kg | 8800 | 9200 |
| Noise dB | 84 | 85 |

(1) ISO 14396:2002

(2) Emission: EU NRMM 97/68/EC Stage 3A
US EPA 4.0 CFR Part 89 Tier3

| | | | | | | | | |
|-------------------------|------|------|--------|------|----------|----------|---------------------|------|
| Dealer | Aut. | Ref. | Per/EE | Reg. | Branding | Material | Max. Lave Dimension | Area |
| DISAB | EE | | | | | | 520 | |
| INDUSTRIAL VACUUM POWER | | | | | | | 520 | |
| FELLA AB | | | | | | | | |
| LAY-OUT SDL | | | | | | | | |
| Vac loader | | | | | | | | |
| INDUSTRIAL VACUUM POWER | | | | | | | | |
| 08 - 514 50 270 | | | | | | | | |
| F-20147E | | | | | | | | |





